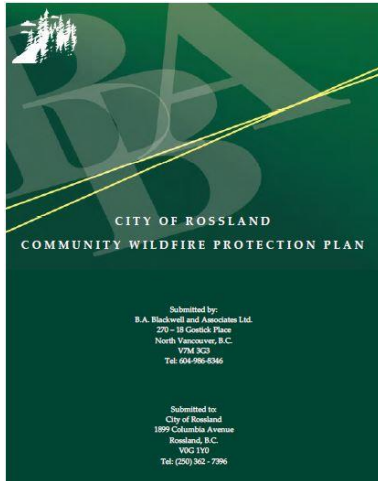




City of Rossland
Community Wildfire Protection Plan
Update – September 2015

What's been going on?



Rossland's Community Wildfire Protection Plan (updated version) is now posted on the City of Rossland website.

Click on the link to the left to have a look.

Of interest to citizens may be the sections on:

- Rossland's Wildfire Risk Profile (Section 7) and;
- Wildfire Risk Reduction Recommendations (Section 8)

This extensive plan (150 pages) provides 49 recommendations to reduce the various wildfire risks faced by the City.

Recommendations are provided in several categories including:

- public education and communication,
- structure protection,
- community planning and bylaws,
- emergency response,
- fuel management,

Fuel management has been the primary focus of the wildfire risk reduction activities undertaken by the City of Rossland to date. Anyone that hikes, bikes or skis the trails in Rossland's interface (where the forest meets the community perimeter) has noticed the fuel treatment projects that reduce hazardous forest fuel buildup around our community.

The pictures below show 'before' and 'after' conditions below the Redhead trail...





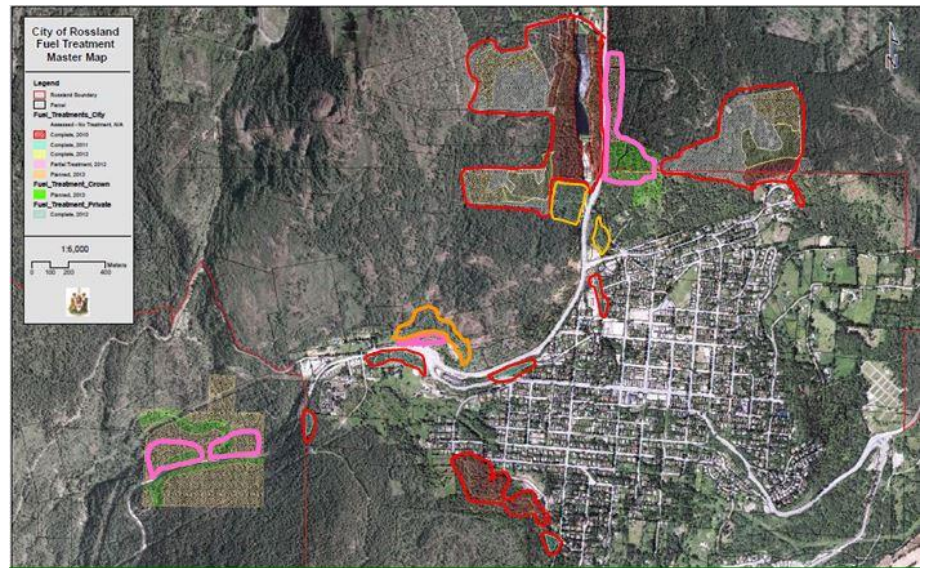
**City of Rosland
Community Wildfire Protection Plan
Update – September 2015**

Since the fall of 2010, Rosland has completed over 65 hectares of wildfire hazard mitigation fuel treatments on public, high hazard interface lands (outlined on map at left).

Treatments on municipal and crown land were largely funded by the province and Teck Resources initiated fuel

treatments on the high hazard interface lands that it owns adjacent Rosland.

At this point, almost \$800,000 worth of fuel treatment work has been done for a net cost to the City of \$95,000. In September of 2015, contractors will be working on completing fuel treatments east of the Star Gulch Reservoir, behind the Museum and north of Hwy. 22 west of Rosland. These areas are outlined in pink on the map above and detailed treatment maps are shown below.



Questions or concerns?
Please contact:
Stacey Lightbourne,
CoR Planner / GIS Technician
staceylightbourne@rossland.ca
250-362-7396.