

**HAVE
YOUR
SAY**

**We're
Listening**

**PUBLIC
MEETING**

Monday

May 12, 2014

5:00pm

Council Chambers
1899 Columbia Ave



Phone
(250)362 7396



PO Box 1179
Rosland, BC
V0G 1Y0



Email:
stacey@
rossland.ca



Website:
www.rossland.ca

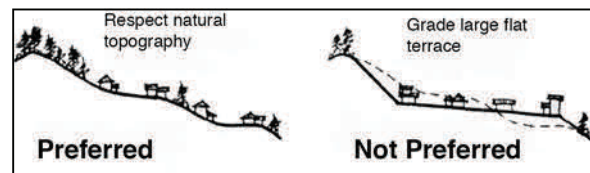
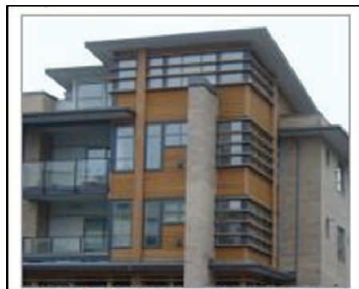
PUBLIC MEETING

Multiple Family Design Guidelines



What is the Public Meeting all about?

Rosland City Council is considering updating Development Permit Area Design Guidelines for all Multiple Family Developments (2 or more units) in Rosland and is seeking public input on the proposed guidelines.



How will this affect me?

All properties zoned R1 Infill are permitted to build a duplex. All other properties in Rosland may apply to Council to rezone to allow 2 or more units. Do you want some control over the design of these multiple family buildings? All multiple family developments in Rosland must comply with these design guidelines after they have been approved by Council.

How do I get more information?

A copy of the proposed guidelines are available at the City of Rosland Office, 1899 Columbia Ave on regular working days from 9 am to 4pm, and also online at www.rossland.ca.

Stacey Lightbourne—Planner