



**City of Rosland**  
**2020 FireSmart Communities Program**  
**FireSmart Rebate Program - March 23, 2020**

**FireSmart Rebate Program for Rosland's FireSmart Communities Program Homeowner's**

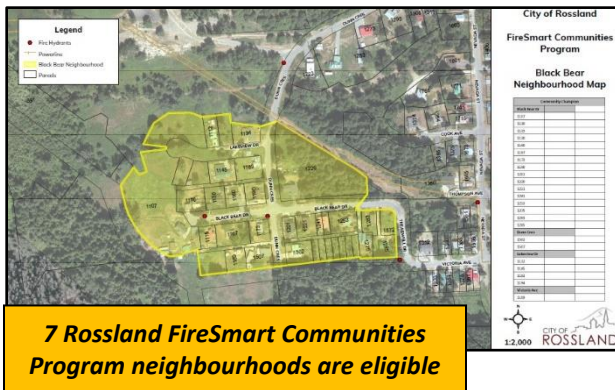


**What?** - Rosland's 'FireSmart Rebate Program' is offering some property owners a rebate of up to \$500 for qualified FireSmart hazard reduction work performed on their homes and yards. Homeowners will be reimbursed for 50% of material and labor costs with a maximum \$500 rebate per property on a \$1,000 or more expenditure.

**Example:** Bob spends \$300 on materials and 8 hours labor installing a section of non-combustible siding at the base of his homes exterior wood siding (creating 15 cm of ground-to-siding non-combustible clearance).

**Bob's expense total is \$500 (\$300 matl's + 8 hrs @ \$25 = \$200)**

**Bob's rebate would be \$250 (50% of \$500)**



**Who?** - Property owners in any of Rosland's FireSmart Communities Program 'recognized' neighbourhoods – can apply. Currently, there are seven recognized neighbourhoods in Rosland: Black Bear, McLeod East, Iron Colt, Kirkup McLeod, Earl Davis, Upper West Spokane and Red Mtn. Black Bear neighbourhood is shown in the sample map at left. Neighbourhood maps can be viewed at [www.rossland.ca/rossland-firesmart-program](http://www.rossland.ca/rossland-firesmart-program)



**How?** - Homeowners eligible to participate in the FireSmart Rebate Program can apply for a free FireSmart hazard assessment on their home and yard. Following the assessment, **homeowners will work with the FireSmart assessor / advisor\*\*** to identify priority hazard items and then perform the required hazard reduction work. Material costs and labor (reimbursed at \$25.43 per hour) are tracked and receipts submitted to the FireSmart advisor during the follow-up assessment visit.

**\*\*Note:** All COVID 19 restrictions will be accommodated.

Visit [www.rossland.ca/rossland-firesmart-program](http://www.rossland.ca/rossland-firesmart-program) for more information and application instructions.

**Qualified applications will be serviced on a first come - first serve basis – Rebate funds are limited – Applicants are advised to submit applications as soon as possible.**