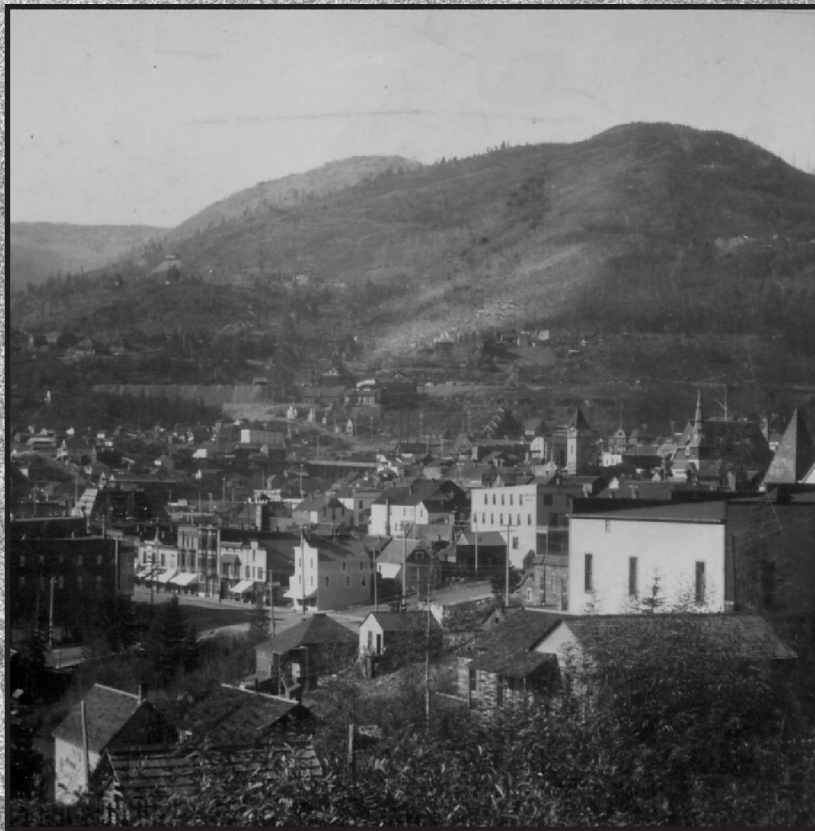


# **Design Guidelines for Downtown Rossland**



**City of Rossland, B.C.**

**September, 1997**



# **Design Guidelines for Downtown Rossland City of Rossland, B.C.**

September, 1997

Prepared for the  
City of Rossland  
by  
Winter & Company

## ***CREDITS***

---

### **CITY OF ROSSLAND**

#### **City Council**

Mayor Bill Profili  
Councillor Dave Butler  
Councillor John MacMaster  
Councillor Lloyd McLellan  
Councillor Robert Miller  
Councillor Vince Profili  
Councillor Byron Siemens

#### **Design Review Committee**

Larry Doell  
Ken Turner  
Joyce Austin  
Jackie Drysdale  
Bill Lazzarotto  
Norm Worsfold  
Lisa Griffiths

#### **City Staff**

André Carrel  
Mark Martin  
Joe Issel  
Jack Richardson

#### **Historic Photographs**

Historic photos are courtesy of the Rossland Historical Museum.

### **CONSULTANTS**

#### **Winter & Company**

**775 Poplar Avenue  
Boulder, CO 80304  
(303) 440-8445  
winterco@concentric.net**

Noré V. Winter  
Brian W. Koenig  
Ray Kramer  
Julia Husband  
Helen Hudson  
Betsy Shears

## **TABLE OF CONTENTS**

---

<b>1.0 HERITAGE CONSERVATION IN ROSSLAND</b>	<b>page</b> <b>1</b>
THE DESIGN REVIEW SYSTEM	3
BASIC CONSERVATION THEORY	8
WHY CONSERVE?	15
<b>2.0 HISTORIC OVERVIEW OF ROSSLAND</b>	<b>19</b>
A HISTORY OF DOWNTOWN	21
HERITAGE BUILDING TYPES	25
<b>CONSERVATION GUIDELINES FOR HERITAGE PROPERTIES</b>	<b>31</b>
<b>3.0 MATERIALS</b>	<b>33</b>
<b>4.0 WINDOWS</b>	<b>41</b>
<b>5.0 DOORS</b>	<b>51</b>
<b>6.0 CANOPIES AND PORCHES</b>	<b>57</b>
<b>7.0 ARCHITECTURAL DETAILS</b>	<b>65</b>
<b>8.0 ROOFS</b>	<b>71</b>
<b>9.0 ADDITIONS</b>	<b>77</b>
<b>10.0 GUIDELINES FOR NEW CONSTRUCTION</b>	<b>85</b>
<b>11.0 GUIDELINES FOR SITE FEATURES</b>	<b>105</b>
<b>12.0 GUIDELINES FOR COLOUR</b>	<b>115</b>
<b>13.0 GUIDELINES FOR SIGNS</b>	<b>119</b>
<b>GLOSSARY</b>	<b>127</b>

## **WHICH CHAPTERS APPLY TO YOUR PROJECT?**

**Use the chart below to determine which section of this book you should use in planning your project.**

<i>Type of work:</i>	<i>Sections to use:</i>	Conservation in Rossland, <i>page 1</i>	Historic Overview of Rossland, <i>page 19</i>	Conservation Guidelines for Heritage Properties, <i>page 31</i>	Guidelines for New Construction, <i>page 83</i>	Guidelines for Site Features, <i>page 99</i>	Guidelines for Colour, <i>page 111</i>	Guidelines for Signs, <i>page 115</i>
To renovate or alter a heritage property:		✗	✗	✗				
To construct an addition to a heritage building:		✗	✗	✗				
To alter a non-contributing building in the area:		✗	✗		✗			
To construct a new building in the area:		✗	✗		✗	✗	✗	
To make site improvements to a property:		✗	✗	✗		✗		
To add a new, or replace an existing sign on a building:		✗	✗					✗
To alter existing colours or to use a new scheme on a heritage building:		✗	✗				✗	